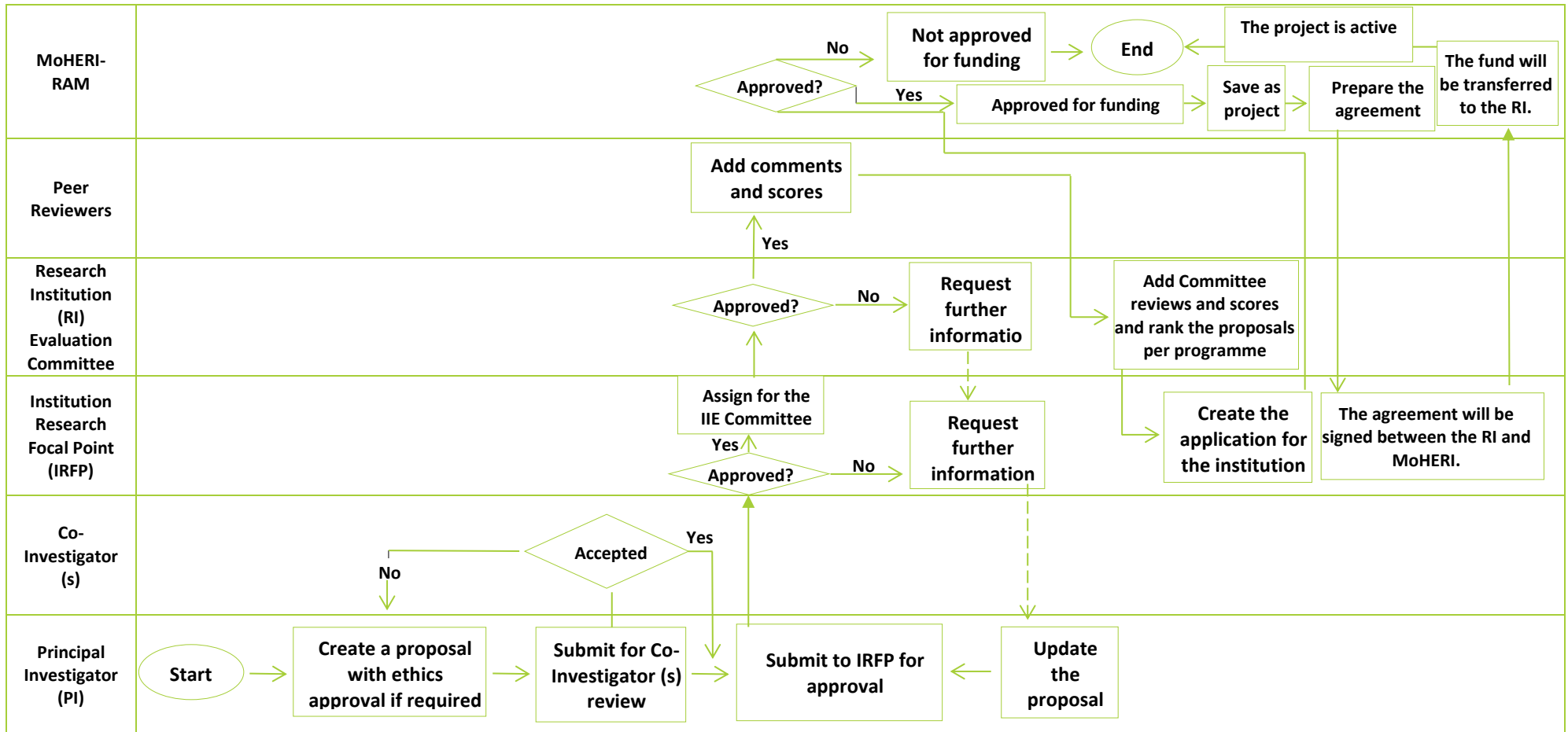


Application and Approval Procedure for MoHERI Grants



Note: Institution Internal Evaluation (IIE) Committee refers to the RC at Gulf College

Adopted from MoHERI's Block Funding Programme guidelines available at <https://www.trc.gov.om/trcweb/sites/default/files/2019-05/GRG%20Guidelines%20Final.pdf>